

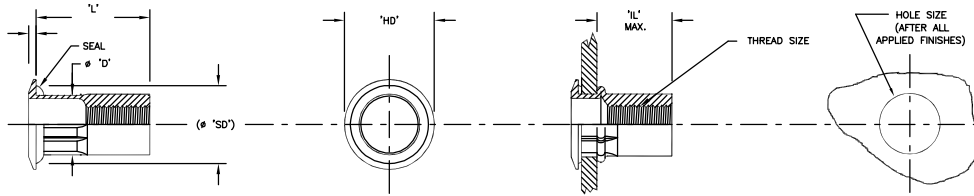


NEW PRODUCTS

CS SERIES INSERT

C-S SERIES INSERT - Patent No. 8,226,339 B2

AVK introduces a new high torque insert for the commercial and industrial markets. The new COMPOSI-SERT™ insert accommodates various grip thicknesses and can be used in a variety of structural materials. Available thread sizes: #10, 1/4, 5/16, M5, M6, M8.

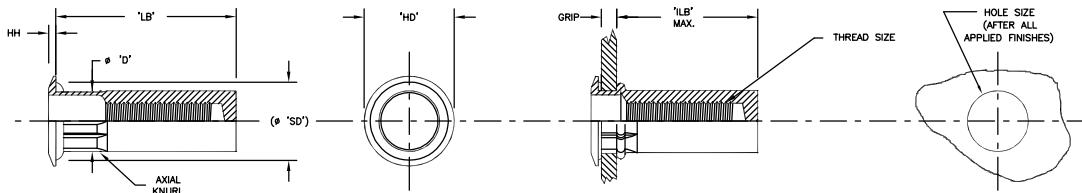


- Various Grip Ranges
- Increased Spin-Out performance over Standard Style Inserts and Rivetnuts.
- Multiple Panel Clamping Capabilities.
- Can be used on a Variety of Structural Materials (including Composite & SMC).
- AVK'S SPP Tool™ Systems or Stroke Tools can be used.
- Low Profile Head Style
- Sealed or Non-Sealed Designs



OPEN END TYPE

THREAD SIZE	THREAD CALL OUT	GRIP RANGE	GRIP CALL OUT	HOLE SIZE	HD	HH	L	IL MAX.	SD
M5X0.80	580	0.5-3.5	3.5	7.75-7.60	10.79-10.29	0.84-0.68	12.45-11.69	8.00	10.79
M5X0.80	580	3.0-6.0	6.0	7.75-7.60	10.79-10.29	0.84-0.68	15.24-14.48	8.00	
M5X0.80	580	5.0-8.0	8.0	7.75-7.60	10.79-10.29	0.84-0.68	18.03-17.27	8.00	
M6X1.0	610	0.7-4.0	4.0	10.15-10.00	16.00-15.00	0.84-0.68	15.11-14.35	9.65	16.00
M6X1.0	610	3.5-6.5	6.5	10.15-10.00	16.00-15.00	0.84-0.68	17.65-16.89	9.65	
M6X1.0	610	6.0-9.0	9.0	10.15-10.00	16.00-15.00	0.84-0.68	20.83-20.07	9.65	
M6X1.0	610	7.5-10.5	10.5	10.15-10.00	16.00-15.00	0.84-0.68	24.00-23.24	9.65	22.39
M8X1.25	8125	0.7-3.8	3.8	13.65-13.50	22.39-21.15	0.97-0.81	17.91-17.15	11.94	
M8X1.25	8125	2.5-5.5	5.5	13.65-13.50	22.39-21.15	0.97-0.81	20.83-20.07	10.80	
M8X1.25	8125	5.0-8.0	8.0	13.65-13.50	22.39-21.15	0.97-0.81	25.91-25.15	13.97	
M8X1.25	8125	7.5-10.5	10.5	13.65-13.50	22.39-21.15	0.97-0.81	28.91-28.15	13.97	



CLOSED END TYPE

THREAD SIZE	THREAD CALL OUT	GRIP RANGE	GRIP CALL OUT	HOLE SIZE	HD	HH	LB MAX	ILB MAX.	SD
M5X0.80	580	0.5-3.5	3.5	7.75-7.60	10.16-9.66	0.84-0.68	28.53-27.77	22.00	10.79
M5X0.80	580	3.0-6.0	6.0	7.75-7.60	10.79-10.29	0.84-0.68	28.53-27.77	22.00	
M5X0.80	580	5.0-8.0	8.0	7.75-7.60	10.79-10.29	0.84-0.68	33.33-32.57	22.00	
M6X1.0	610	0.7-4.0	4.0	10.15-10.00	16.00-15.00	0.84-0.68	30.61-29.85	25.53	16.00
M6X1.0	610	3.5-6.5	6.5	10.15-10.00	16.00-15.00	0.84-0.68	30.61-29.85	22.99	
M6X1.0	610	6.0-9.0	9.0	10.15-10.00	16.00-15.00	0.84-0.68	36.83-36.19	25.53	
M6X1.0	610	8.5-11.5	11.5	10.15-10.00	16.00-15.00	0.84-0.68	36.83-36.19	22.99	22.39
M8X1.25	8125	0.7-3.8	3.8	13.65-13.50	22.39-21.15	0.97-0.81	35.69-34.93	29.85	
M8X1.25	8125	2.5-5.5	5.5	13.65-13.50	22.39-21.15	0.97-0.81	35.69-34.93	26.04	
M8X1.25	8125	5.0-8.0	8.0	13.65-13.50	22.39-21.15	0.97-0.81	41.66-40.89	29.85	
M8X1.25	8125	7.5-10.5	10.5	13.65-13.50	22.39-21.15	0.97-0.81	41.66-40.89	26.04	

PART NUMBERING SYSTEM



SAMPLE NUMBER: CSS4T-610-6.5

